

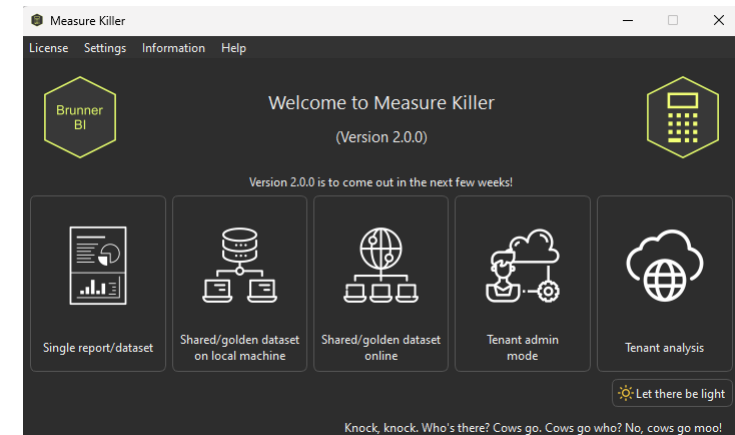
Measure Killer

external tool for Microsoft Power BI



Feature list:

- Finding all unused columns and measures
- Analyzing shared/golden datasets with all connected reports (Power BI, Paginated and Analyze in Excel files)
- Full lineage including personal workspaces and child/downstream models
- Tenant Analysis (scanning all datasets and reports) in Premium, Fabric, Pro and Personal workspaces.
- Best Practice Analysis for your whole tenant (see which semantic models are the biggest violators)
- Access tab (see who has access to what in your Power BI and Fabric environment)
- Brand new mode for Analysis Services (only migrate what is currently used in reports)
- Find all custom visuals used in your tenant



Power BI Tenant Analysis

Provides a meta analysis of your Power BI tenant with unique insights

Only requires an installation of Measure Killer + a tenant admin user

Tackles unique issues for admins:

Full lineage (data source -> visual) including Personal workspaces

Custom visual usage in your tenant

Who is building Report-level measures where?

Analysis of Personal workspaces

Which models LocalDateTables, number of calculated columns or bi-directional relationships

Best practice analyzer for all models in your tenant

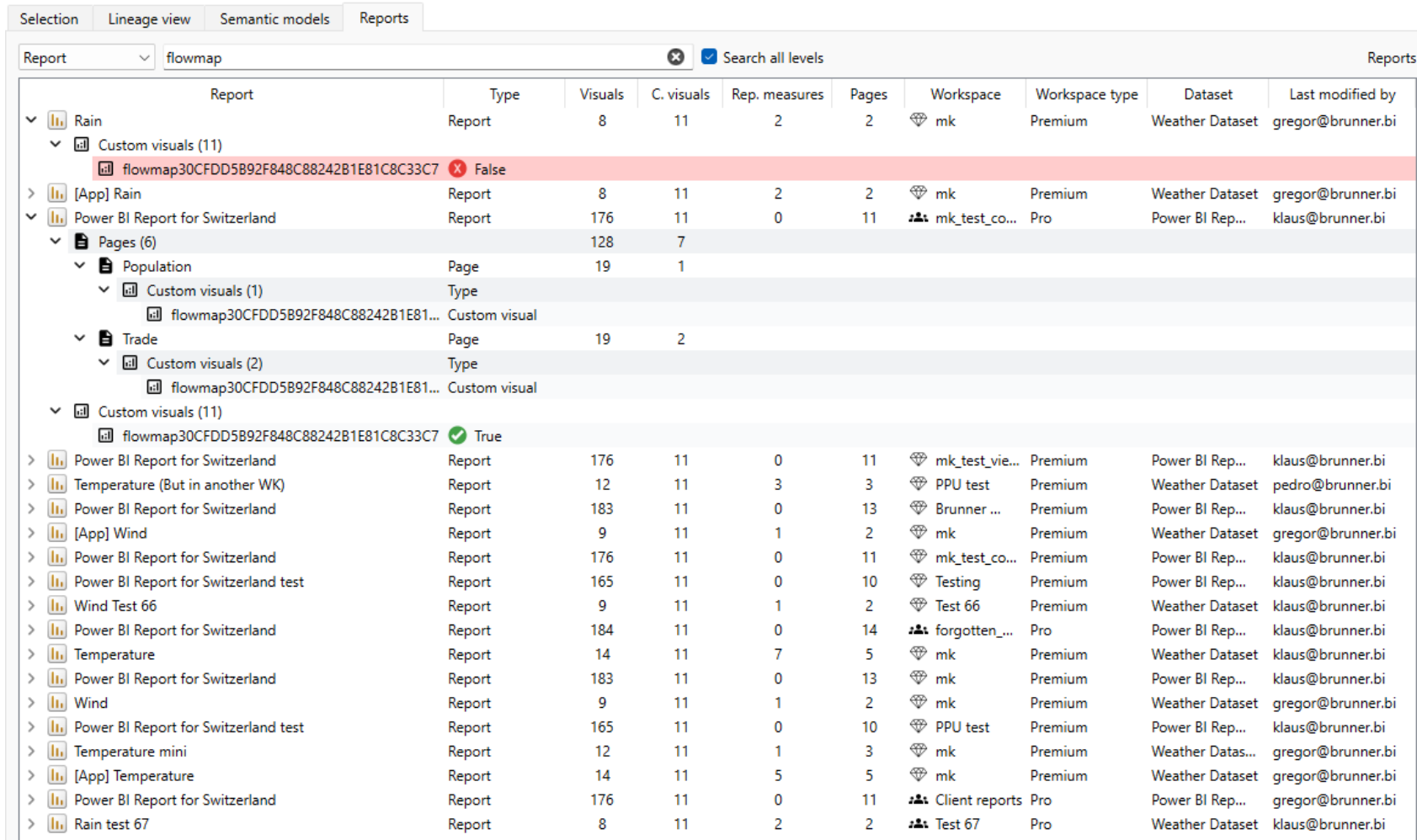
Access Tab (who has access to what)

Searching M and DAX code on a tenant level (finding where database views are used etc.)



Power BI Tenant analysis

See where custom visuals are used – search for them on a tenant-level and see if they are certified or not



The screenshot shows the Power BI Reports view with a search filter 'flowmap' applied. The table below represents the data shown in the interface.

Report	Type	Visuals	C. visuals	Rep. measures	Pages	Workspace	Workspace type	Dataset	Last modified by
Report									
▼ Rain	Report	8	11	2	2	mk	Premium	Weather Dataset	gregor@brunner.bi
▼ Custom visuals (11)									
flowmap30CFDD5B92F848C88242B1E81C8C33C7	Custom visual			False					
> [App] Rain	Report	8	11	2	2	mk	Premium	Weather Dataset	gregor@brunner.bi
▼ Power BI Report for Switzerland	Report	176	11	0	11	mk_test_co...	Pro	Power BI Rep...	klaus@brunner.bi
▼ Pages (6)		128	7						
▼ Population	Page	19	1						
▼ Custom visuals (1)	Type								
flowmap30CFDD5B92F848C88242B1E81...	Custom visual								
▼ Trade	Page	19	2						
▼ Custom visuals (2)	Type								
flowmap30CFDD5B92F848C88242B1E81...	Custom visual								
▼ Custom visuals (11)									
flowmap30CFDD5B92F848C88242B1E81C8C33C7	Custom visual			True					
> Power BI Report for Switzerland	Report	176	11	0	11	mk_test_vie...	Premium	Power BI Rep...	klaus@brunner.bi
> Temperature (But in another WK)	Report	12	11	3	3	PPU test	Premium	Weather Dataset	pedro@brunner.bi
> Power BI Report for Switzerland	Report	183	11	0	13	Brunner ...	Premium	Power BI Rep...	klaus@brunner.bi
> [App] Wind	Report	9	11	1	2	mk	Premium	Weather Dataset	gregor@brunner.bi
> Power BI Report for Switzerland	Report	176	11	0	11	mk_test_co...	Premium	Power BI Rep...	klaus@brunner.bi
> Power BI Report for Switzerland test	Report	165	11	0	10	Testing	Premium	Power BI Rep...	klaus@brunner.bi
> Wind Test 66	Report	9	11	1	2	Test 66	Premium	Weather Dataset	klaus@brunner.bi
> Power BI Report for Switzerland	Report	184	11	0	14	forgotten_...	Pro	Power BI Rep...	klaus@brunner.bi
> Temperature	Report	14	11	7	5	mk	Premium	Weather Dataset	klaus@brunner.bi
> Power BI Report for Switzerland	Report	183	11	0	13	mk	Premium	Power BI Rep...	klaus@brunner.bi
> Wind	Report	9	11	1	2	mk	Premium	Weather Dataset	gregor@brunner.bi
> Power BI Report for Switzerland test	Report	165	11	0	10	PPU test	Premium	Power BI Rep...	klaus@brunner.bi
> Temperature mini	Report	12	11	1	3	mk	Premium	Weather Datas...	gregor@brunner.bi
> [App] Temperature	Report	14	11	5	5	mk	Premium	Weather Dataset	gregor@brunner.bi
> Power BI Report for Switzerland	Report	176	11	0	11	Client reports	Pro	Power BI Rep...	gregor@brunner.bi
> Rain test 67	Report	8	11	2	2	Test 67	Pro	Weather Dataset	klaus@brunner.bi



Power BI Tenant analysis

See who is building reports in personal workspaces on productive datasets

Source type Search all levels Showing datasets in premium workspaces

Name	Type	Source	Source type	Size	Calc. Cols	Reports	Status	Last modified by
Weather Dataset	Semantic model	mk	Premium	24.9 MB	5	21	Analyzed partially	klaus@brunner.bi
Connected Reports (16)								
personal_web_auth	Report	My ...	Personal Premium				Inaccessible	
personal_test_report	Report	My ...	Personal Premium				Inaccessible	
mk_analytics	Semantic model	mk	Premium	11.3 MB	0	3	Analyzed partially	gregor@brunner.bi
Connected Reports (3)								
priv_analytics	Report	My ...	Personal Premium				Inaccessible	



Tenant Analysis - Access

Selection Workspaces Model lineage Data source lineage Access Semantic models Power BI reports DAX expressions M Expressions

Users level

Name Search Search all levels

Name	Type	Access right	Workspace	Workspace type	Capacity
> PowerBIAdminGroupDisplayName	Group				
> ...	User				
> BrunnerBI-admins	Group				
> klaus@brunner.bi	User				
▼ gregor@brunner.bi	User				
> Access to workspaces (45)	Type	Access right			Capacity
> Access to semantic models (135)	Type	Access right	Workspace	Workspace type	Capacity
> Access to reports (152)	Type	Access right	Workspace	Workspace type	Capacity
▼ Access to dataflows (9)	Type	Access right	Workspace	Workspace type	Capacity
World data	Dataflow (Gen. 1)	Owner	Brunner BI Projects	Premium	PP3
Client_timesheets	Dataflow (Gen. 1)	Owner	Internal	Pro	
source-files	Dataflow (Gen. 1)	Owner	imdb	Premium	PP3
imdb_data	Dataflow (Gen. 2)	ReadWrite	fabric-direct-lake	Premium	FT1
One dataflow to rule them all	Dataflow (Gen. 1)	Owner	Measure Killer Testing	Premium	FT1
World weather forecast	Dataflow (Gen. 1)	Owner	Brunner BI Projects	Premium	PP3
MK_analytics	Dataflow (Gen. 1)	Owner	Measure Killer Testing	Premium	FT1
Adventure Works	Dataflow (Gen. 1)	Owner	Adventure Works	Pro	
sqlbits-dataflow-gen2	Dataflow (Gen. 2)	ReadWrite	fabric-direct-lake	Premium	FT1
> Access to dashboards (15)	Type	Access right	Workspace	Workspace type	Capacity
> Access to lakehouses (6)	Type	Access right	Workspace	Workspace type	Capacity
> Access to datamarts (3)	Type	Access right	Workspace	Workspace type	Capacity
> Access to notebooks (7)	Type	Access right	Workspace	Workspace type	Capacity
> Access to reflexes (1)	Type	Access right	Workspace	Workspace type	Capacity
▼ Access to datapipelines (2)	Type	Access right	Workspace	Workspace type	Capacity
Load data	Data Pipeline	ReadWriteExecute	fabric-direct-lake	Premium	FT1
test	Data Pipeline	ReadWriteReshareExecute	Measure Killer Testing	Premium	FT1
> AdminInsights-42df8343-0e9b-419...	User				
> pedro@brunner.bi	User				
> sebastian@brunner.bi	User				
> pedro@766wm3.onmicrosoft.com	User				

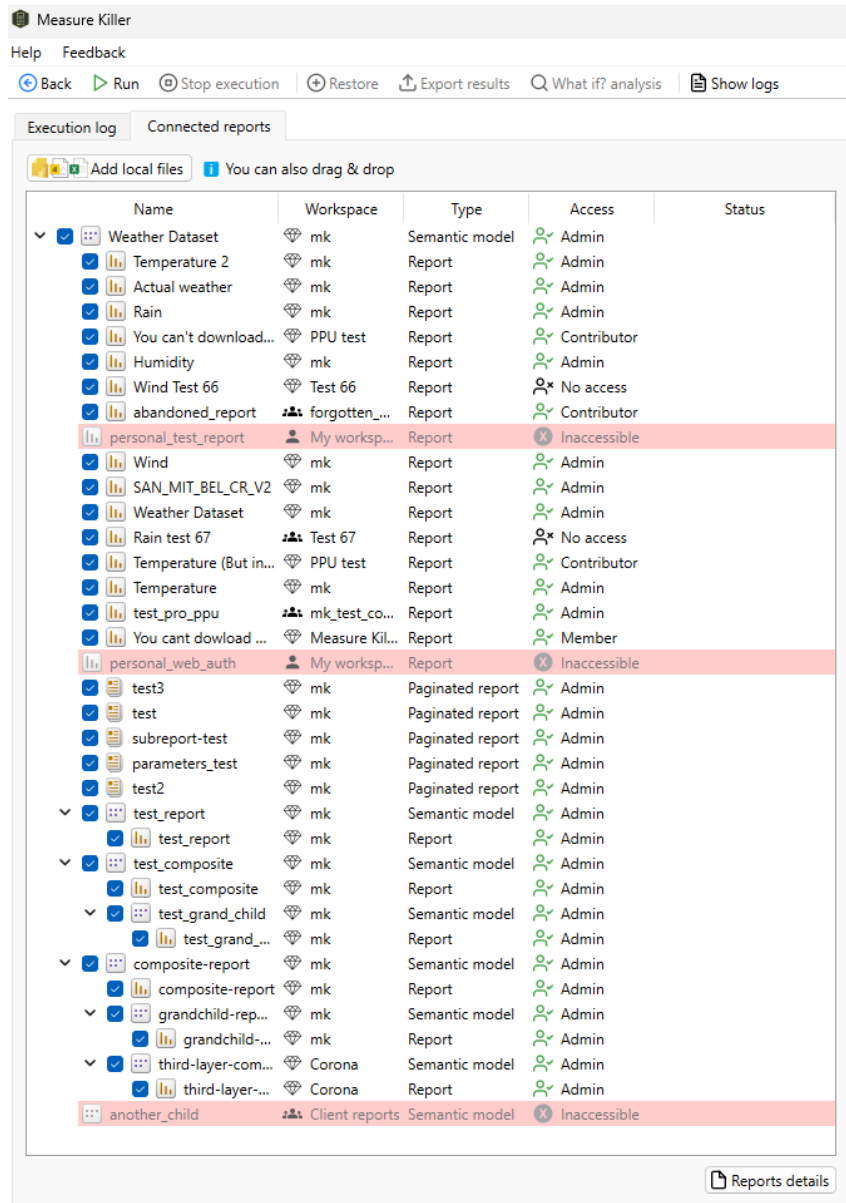
⚠ Artifacts/users displayed in yellow: The user has access to an artifact but does not have access to the workspace where it resides

See which users or groups have what access across the whole tenant.

This includes Power BI and Fabric and shows workspace level and artifact level (models, reports, dashboards, dataflows etc.)



Full lineage in Tenant Admin Mode



The screenshot shows the Measure Killer application interface. At the top, there is a title bar "Measure Killer" and a menu bar with "Help" and "Feedback". Below the menu bar is a toolbar with buttons for "Back", "Run", "Stop execution", "Restore", "Export results", "What if? analysis", and "Show logs". The main area is divided into two tabs: "Execution log" and "Connected reports". The "Connected reports" tab is active, showing a list of reports and semantic models. The list has columns for "Name", "Workspace", "Type", "Access", and "Status".

Name	Workspace	Type	Access	Status
Weather Dataset	mk	Semantic model	Admin	
Temperature 2	mk	Report	Admin	
Actual weather	mk	Report	Admin	
Rain	mk	Report	Admin	
You can't download...	PPU test	Report	Contributor	
Humidity	mk	Report	Admin	
Wind Test 66	Test 66	Report	No access	
abandoned_report	forgotten_...	Report	Contributor	
personal_test_report	My worksp...	Report	Inaccessible	
Wind	mk	Report	Admin	
SAN_MIT_BEL_CR_V2	mk	Report	Admin	
Weather Dataset	mk	Report	Admin	
Rain test 67	Test 67	Report	No access	
Temperature (But in...	PPU test	Report	Contributor	
Temperature	mk	Report	Admin	
test_pro_ppu	mk_test_co...	Report	Admin	
You cant download ...	Measure Kil...	Report	Member	
personal_web_auth	My worksp...	Report	Inaccessible	
test3	mk	Paginated report	Admin	
test	mk	Paginated report	Admin	
subreport-test	mk	Paginated report	Admin	
parameters_test	mk	Paginated report	Admin	
test2	mk	Paginated report	Admin	
test_report	mk	Semantic model	Admin	
test_report	mk	Report	Admin	
test_composite	mk	Semantic model	Admin	
test_composite	mk	Report	Admin	
test_grand_child	mk	Semantic model	Admin	
test_grand_...	mk	Report	Admin	
composite-report	mk	Semantic model	Admin	
composite-report	mk	Report	Admin	
grandchild-rep...	mk	Semantic model	Admin	
grandchild-...	mk	Report	Admin	
third-layer-com...	Corona	Semantic model	Admin	
third-layer-...	Corona	Report	Admin	
another_child	Client reports	Semantic model	Inaccessible	

This includes downstream/child semantic models (composite models).

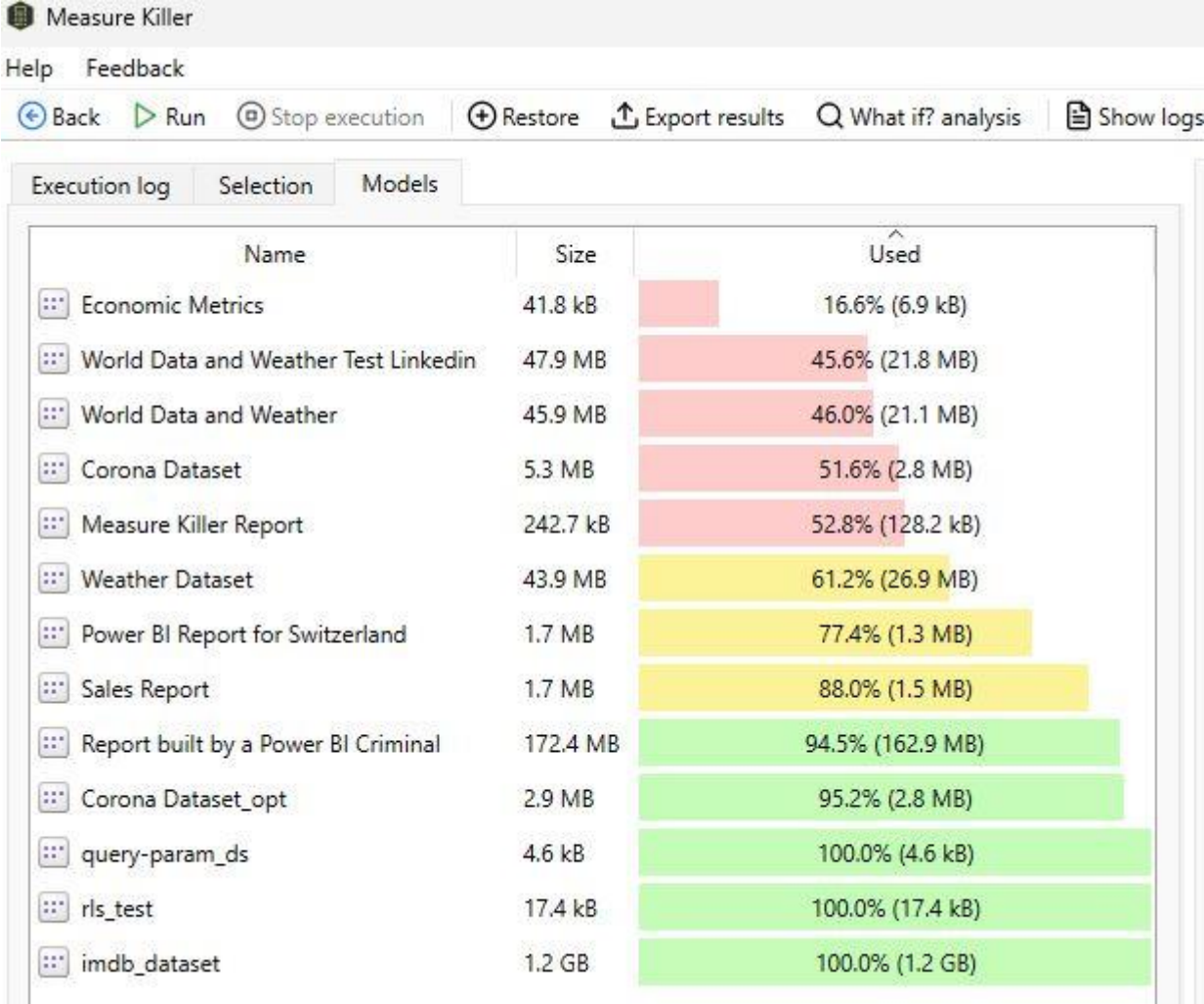
You can also see if someone built a report on top of the dataset you are analyzing in their personal workspace.

As always, you have full flexibility to take out reports or add local files.

The tool will find Power BI reports, Paginated Reports and Analyze in Excel files automatically.



Analyze multiple models at once



Analyze all major semantic models in your tenant at once and see which one has the biggest potential for optimization.





LinkedIn

Reach out

www.brunner.bi
gregor@brunner.bi



Website

